

Our service for you:

- Comprehensive planning advice
- Support with project planning
- Customised system for your individual requirements
- Variable gauge block design
- Standardised design
- Shortest delivery time
- Highest quality

09/2025

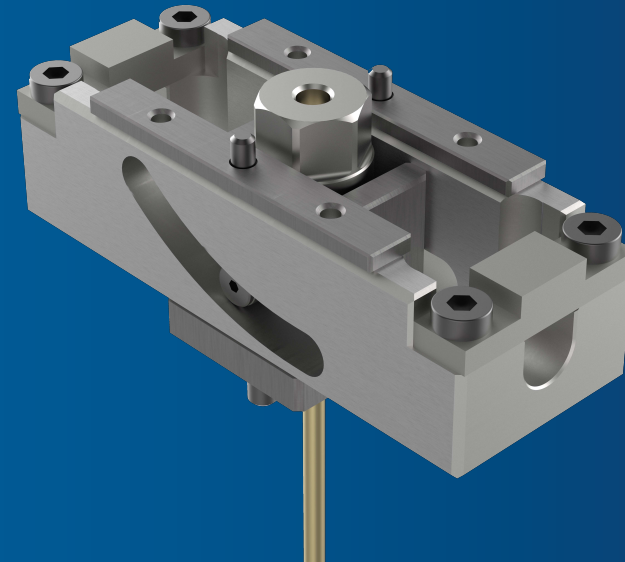


We will be happy to
advise you:

T +49 6451 5008-0
info@guenther-heisskanal.de

COMPACTDRIVE

The needle shut-off actuator
for the highest demands.



GÜNTHER Heisskanaltechnik GmbH

Industriepark Nord | Sachsenberger Straße 1 | 35066 Frankenberg (Eder) | Germany

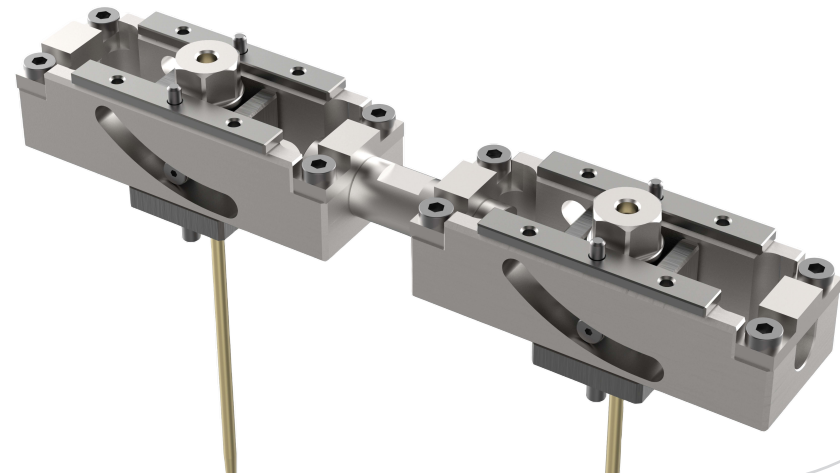
T +49 6451 5008 - 0 | info@guenther-heisskanal.de

www.guenther-heisskanal.de



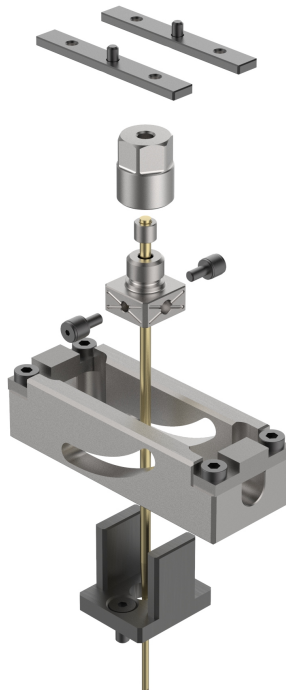
CompactDrive for valve actuation

Our innovative valve gate actuation system combines maximum precision with a compact design, making it the ideal solution for modern mold concepts. The minimal installation space allows integration even under tight conditions. Thanks to its modular concept, the system remains flexible and can be adapted to different requirements, while maintenance is simplified since individual components can be serviced or replaced quickly and easily.



Your benefits:

- Compact installation space
- Modular design
- Easy maintenance
- Ideal force transmission
- High tool stability
- Fast availability



Maximum flexibility with minimal effort

The optimized force transmission ensures reliable and precise needle closure directly at the gate. At the same time, the compact dimensions of the drive unit guarantee high mold stability. Completing the system is its fast availability, which ensures short delivery times and reliable production planning.

With this unique combination of efficiency, flexibility, and durability, the valve gate actuation system sets new standards in hot runner technology.